

DESIGNING & CREATING



WE ARE ABOUT BEING THE BEST

WWW.LLOYDDESIGNUAE.COM

Since its inception in 2018, Lloyd Design Fitouts has taken considerable steps to position itself as a regional Interior architecture organization. The growth of the company resulted in a considerable expansion in terms of its workforce, whilst maintaining the initial DNA that the company was founded upon, which is to be the leading Interior Design Firm in the region.

We have sought out the very best expertise across many different fields to form a team of experts that include architects, quantity surveyors, interior designers, engineers, amongst others. Many of the staff have been with the company since its formation, this has allowed for the company ethics and values to be maintained throughout.

The vision of the company remains both being ambitious and being true to itself. The wishes of clients being realized with impeccable quality remains our utmost priority. Lloyd Design achieves this by remaining ahead of the curve in terms of materials, technology and design concepts.

Our objective is to rethink, redesign, and restructure your space to make sure function strictly meets aesthetics. We always listen to our clients' needs and then bring our knowledge and expertise to the table. We pride ourselves on getting things right on time and within budget.

Our people are culturally connected, fearlessly creative, and we have the strategic insight to bring valued vision to life. We are empowered and motivated to be passionate and bold. We only deliver work we always take pride in.

Just like how you aim your brand to be, we are about being the BEST.



Our Services



Interior Design

We have experienced and expert interior design team providing tailored solutions for hotels, offices, restaurants, retail stores, and other spaces that speak of luxury, innovation, and aesthetic appeal.



Fitout Contracting

Our team provides full services in interior fitout and/or space refurbishment for office, commercial, F&B, residential, and healthcare turnkey projects.



Renovations

Our specialization of commercial and residential renovations includes offices, warehouses, villas, retail shops, and hotels.



Joinery & Furniture

We have a full-pledged team expert of joinery and furniture fabrication with our own massive local production facility. Team consists of skilled carpenters, painters, craftsmen, and supervisors.



MEP Services

Our company has inhouse MEP team that are highly experienced in full MEP works, whether small or big scale, our expert team can definitely deliver.



Authority Approvals

We are specialized in taking approvals from all authorities in the country including but not limited to; Dubai Municipality, Tecom, DCCA, Civil Defense, DEWA, Trakhees, Abu Dhabi Municipality, Concordia, etc., & all property developers.



Project Management

Our strong team of Project Managers and Supervisors are capable of planning, budgeting, and execution of projects in any scale, with strict enforcement of project goals and deadlines.



Space Planning

We ensure to put our expertise to full use, to plan and arrange your space planning ideas, so that every corner comes to life and reflects the best version of you.



Our design approach is to make sure that everything is questioned and therefore quality checked, indeed it would be fair to say that our Quality policy is built-in from the design process to execution itself.

We constantly review all on-going and completed projects, making sure that everything is properly documented as it goes through all the stages until the full realization of the project.

The project goal is not just merely delivering, it is delivering in quality and with client satisfaction.

We have prestigious collaborations that allow us to have exclusivity on high level construction supplies. Our catalogue contains a huge choice of Interior Construction materials to suit any kind of fitout projects and answer question of the most discerning professionals. Our company markets in the Interior Construction industry throughout the UAE.

Lloyd Design Fitouts combines extraordinary talent and global experiences to create spaces, nationally and worldwide, that can be as “cutting edge” and “timeless” as the exceptionality of each of our client.

We pride ourselves in handing over all projects of quality, excellence, and value.



We at Lloyd Design Fitouts are dedicated to keeping highest standard of Safety. Keeping all measure necessary to ensure the safety of everyone involved in the project.

Our team of Interior Designers and Architect are making sure we adhere to the locale's Safety regulations. We always design to space functionality without compromising safety measures.

We make sure everyone involve is informed about the proper Health & Safety matters, and that everyone is obliged to comply with all rules and requirements.

Our Health & Safety team always identify all hazards of the projects, and addresses those that can not be eliminated. Our H&S commitments are the following;

- protection of our personnel
- prevention of harm and damage to production
- preservation of the environment
- promote our company's reputation and social responsibility
- comply with the health, safety, and environmental requirements.

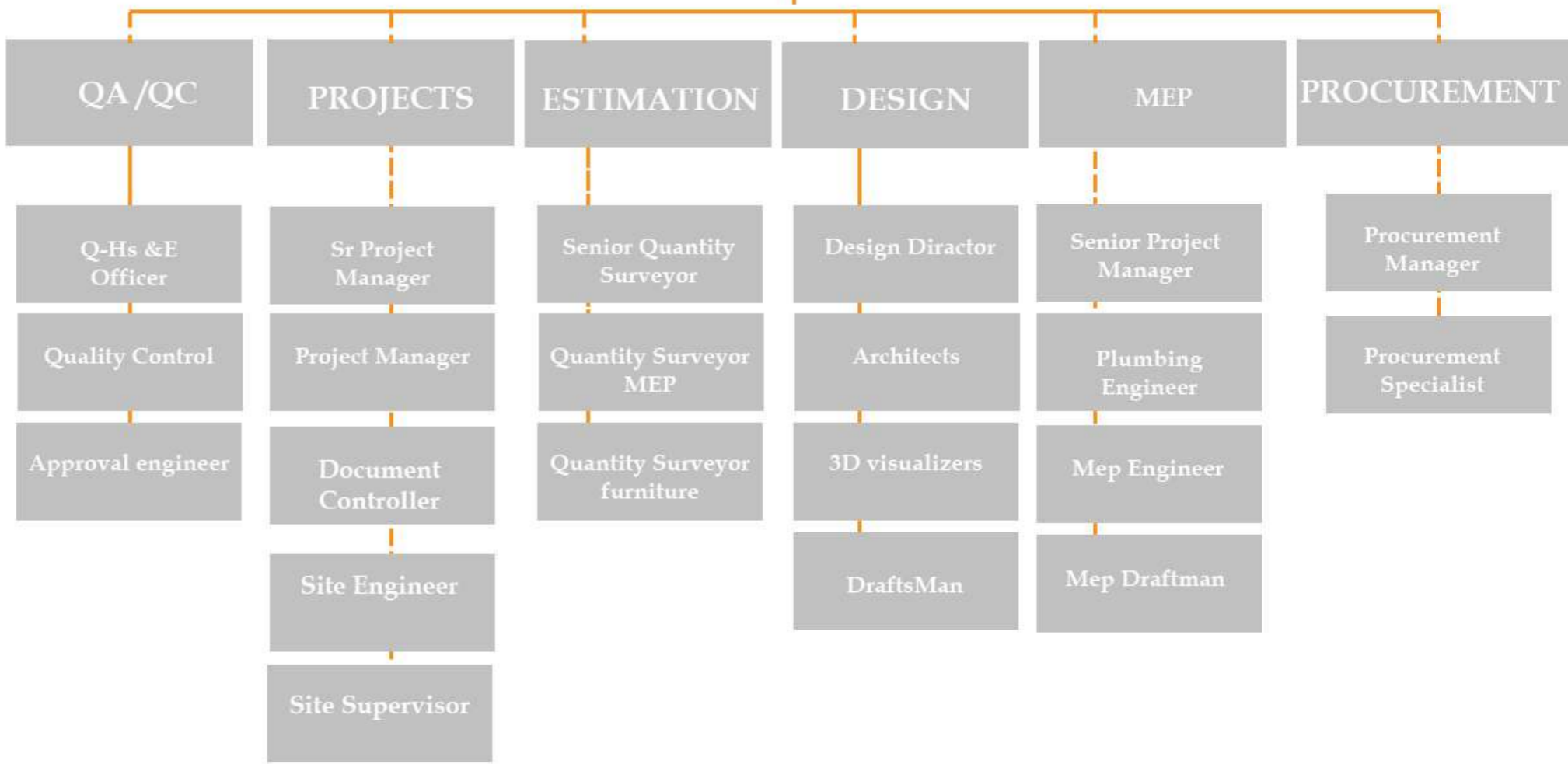
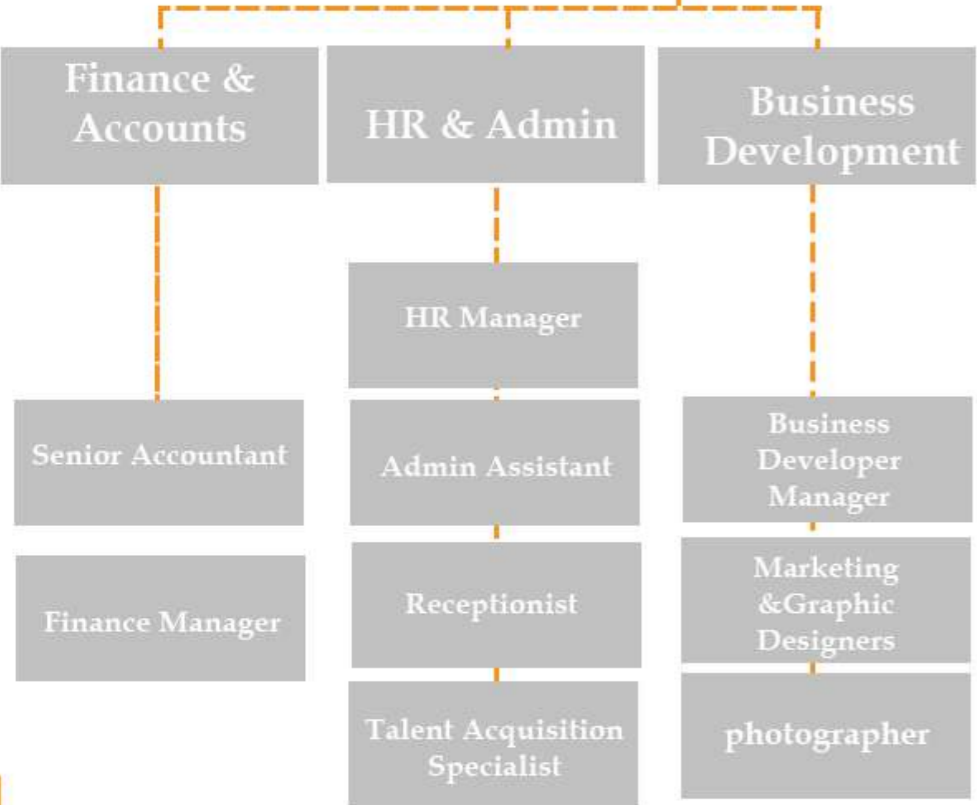
The implementation of AHSAS 18001 Occupational Health and Safety Management System Standards is taken seriously. We aim to maintain a zero-accident work environment and continually improve through the process.



Managing Partner

Business Support

Business Operations



OUR TEAM



Managing Partner

Shaima, our respected Founder and vibrant Managing Partner at Lloyd Fit Out, serves as the driving visionary guiding the company's strategic endeavors. Her steadfast commitment and exceptional leadership inspire us to aim higher, continually setting new benchmarks of excellence within our industry.



Managing Partner & General Manager

Fasil, Co-Founder and General Manager of Lloyd Fit Out, is the instrumental driving force steering our business towards success. Demonstrating consummate professionalism, he is intricately involved in every aspect of the company's operations. With an impressive track record, Fasil has overseen the successful completion of over 300 projects, showcasing his exceptional leadership and expertise.



Project Director

Imran, with an extensive 30 years of construction experience in Dubai, including a decade at Swiss Bureau, he serves as our esteemed and trusted Project Director. He has been an integral part of Lloyd since its inception and is your dedicated point of contact for the project. Imran's remarkable portfolio encompasses work on prominent projects such as Mirabaud, Ajman DED, DU HQ, Radisson Blu, and many others. His expertise spans across several of Dubai's iconic towers.



Design Director

Richard, with an impressive 30 years of design experience internationally, encompassing 15 years in the Middle East, he brings a wealth of expertise to our team. His background includes 10 years of consultancy in London, specializing in workplace strategy and spatial analysis for numerous blue-chip organizations globally. Richard's recent projects feature notable establishments such as the Prime Minister's Office in Dubai, PWC HQ, Givaudan Laboratories, and Credit Suisse.



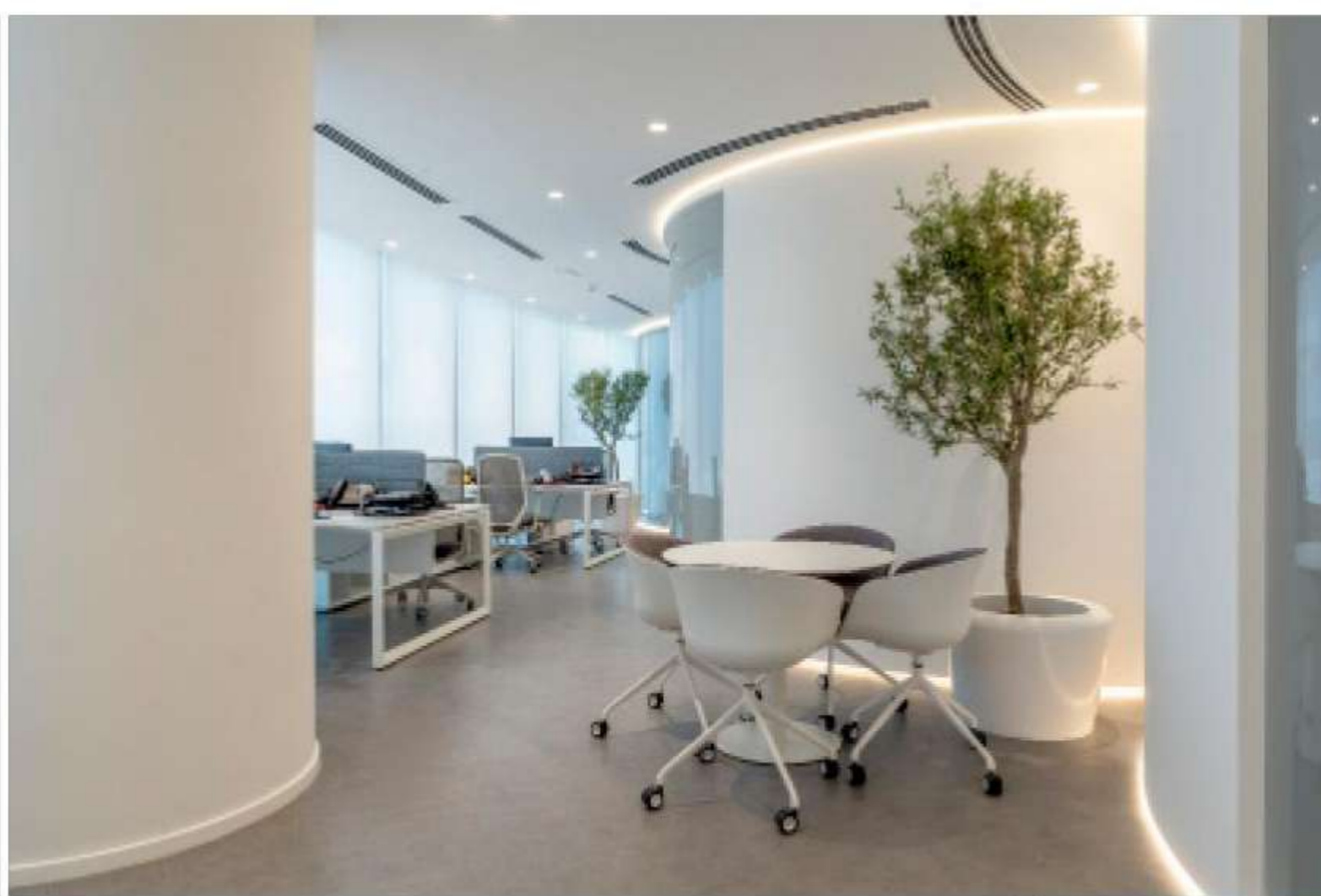
Estimation Manager

Jiji, our Estimation Manager, holds a wealth of experience garnered over 16 years in the dynamic landscape of Dubai. During this time, Jiji has actively contributed to and collaborated with leading design and build practices, acquiring a deep understanding of the industry's nuances and best practices.

CASE STUDY

MoellHausen FFZ

With 56 years in the perfumery business Moellhausen, an Italian Based company, was looking to expand its business interests in the MENA region. The office based in Jafza 1 was the first phase of the expansion which is now into the development of a complete laboratory and testing facility in Jebel Ali



LOCATION : JAFZA - DUABI

AREA : NIA 500 Sqm
POPULATION : 250

COMPLETED : 12 WEEKS 2022



CASE STUDY

IFM Solutions

Based in Conrad Tower IFM Solutions was a Turnkey project of 500 sqm delivered in 12 weeks. The rich combination of materials and clean minimal lines was born out of the clients international understanding of design aesthetic. Key to the projects success was the attention to detail and ontime delivery.

LOCATION : DUBAI

AREA : NIA 500 Sqm
POPULATION : 50

COMPLETED : 12 WEEKS 2022



CASE STUDY

Ajman DED

The Development of this Shell and core space for Ajman DED was a full Turnkey package. From Initial design phase through to furniture and delivery. The project was completed in 2021 and additional facilities were added in 2022 based on the success of the initial project.



دائرة التنمية الاقتصادية
DEPARTMENT OF ECONOMIC DEVELOPMENT

LOCATION : AJMAN
AREA : NIA 1800 Sqm
POPULATION : 250
COMPLETED : 16 WEEKS 2021



OFFICES

Tilad Investment Co. Ltd.

Location: Bldg. 6, Brookfield Place, DIFC Gate
Project Value: AED 1.5 Million
Area: 450 sqm.
Completion: June 2021
Description: A warm Modernism approach to a renowned company in a premier location.



Aldar Hotels & Hospitality LLC Office

Location: Mezzanine, Yas Rotana Hotel
Project Value: AED 770,000
Area: 280 sqm.
Completion: April 2021
Description: A beautiful contemporary take on this premier client, elegantly sleek mirroring the identity of their brand.



OFFICES

Bolton Holding Group, Burj Khalifa, Corporate Suites

Location: 143-01 Burj Khalifa, Corporate Suites

Project Value: AED 1.6 Million

Area: 280 sqm.

Completion: January 2019

Description: A warm Modernism approach to a renowned company in a premier location.



Golden Luxury Trading, Rolex Tower

Location: Unit 1903, Rolex Twin Tower

Project Value: AED 750,000

Area: 224 sqm.

Completion: March 2021

Description: An Art Nouveau take with massive touch of Gold finishes to bring out extreme luxurious look and feel.



HOSPITALITY

Radisson Blu Abu Dhabi – Hotel & Resort, Grand Ballroom

Location: Radisson Blu Abu Dhabi

Project Value: AED 2.2 Million

Area: 2000 sqm. (Total Ballroom Area)

Completion: September 2020

Description: A 5-star facelift approach of a 2000-person-capacity Grand Ballroom.



Radisson Blu Abu Dhabi – Hotel & Resort, Majlis and Public Areas

Location: Radisson Blu Abu Dhabi

Project Value: AED 2.7 Million

Area: 840 sqm. (Total Scope Area)

Completion: November 2020

Description: We have completely converted dull and old areas to a mid-century modern interior in an elegantly bright ambience.



CAF Cafe

Location: Al Khalidiya, Abu Dhabi

Project Value: AED 950,000

Area: 170 sqm.

Completion: February 2021

Description: A monochromatic and sleek industrial minimalism design is making the ambience inviting and elegant.



Starbucks

Location: Deira City Center

Project Value: AED 1.25 Million

Area: 130 sqm.

Completion: June 2019

Description: A colorful take of contemporary style interior with outrageous accents of textures and patterns.



P.F. Chang's Restaurant

Location: Dubai Festival Mall
 Project Value: AED 1.4 Million
 Area: 380 sqm.
 Completion: May 2018
 Description: A famous concept restaurant where the Asian design reflects their cuisine.



Shababeek Restaurant

Location: Al Qasba, Sharjah
 Project Value: AED 1.15 Million
 Area: 150 sqm.
 Completion: November 2018
 Description: An eclectic and elegant mix of Contemporary and Art Deco style.



HEALTH CARE



Mediclinic City Hospital – Comprehensive Cancer Center

Location: Bldg. 35, Dubai Healthcare City

Area: 2000 sqm.

Completion: January 2017

Description: A modern styled hospital with clear-cut and sleek features that collectively offers classy approach.



HEALTH CARE

True Smile Works Dental Clinic

Location: Marsa Plaza, Marsa Al Khor, Dubai
Area: 700 sqm.
Completion: December 2018
Description: A modern-contemporary plus clinical take with on-brand ambience.



HEALTH CARE



Skin Laundry California

Location: Marina Gate -Dubai
Area: 900 sqm.
Completion: March 2017
Description: A clinical Minimal style approach for the entire space.



HEALTH CARE



Gemelli Clinic

Location: Jumeira ,Dubai

Area: 2700 sqm.

Description: Minimal clinic concept for a highly luxuriously sleek look and feel.



Our Clientele

We have remained at the top because we simply deliver our one promise, and that is to understand and convey client's needs.

We are recurrently working with big names from one industry to the other, took pride for it but keeping modest at the same time.



Contact Us

Head Office

Address: Building No.3 - office 3023 -3024
Gold & Diamond Park - Al Quoz - Al
Quoz Industrial Area 3 – Dubai
P.O.Box: 232046
Tel: 04-2257031
Whatsapp: +971563707810
Email: info@ldfitouts.com
Website: www.Ldfitouts.com



Joinery and Furniture Warehouse

Address: Warehouse 05, Sajjah, EIC,
Sharjah (near Glaze Marble)

